





**SKYLINER**  
4712 P

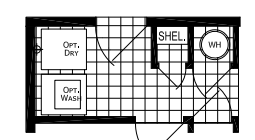
3 BED-2 BATH  
1369 SQ. FT.

Shown with Optional Exterior

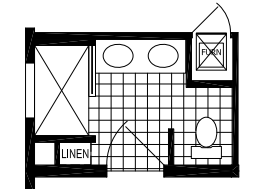
**SKYLINER SERIES**  
SINGLE-SECTION

Inspired touches make the Skyliner Series by Skyline Homes anything but ordinary. Skyline offers three and four bedroom models, each with two baths. Whether you opt for the base floor plan or the optional den and laundry room, you're sure to find a comfortable place to call home.

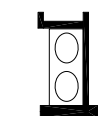
Manufactured in Arkansas City, Kansas and backed by over 65 years of manufacturing experience, a 12-month warranty and stellar customer service – take a look for yourself to see why the Skyliner Series is the right decision for you and your family.



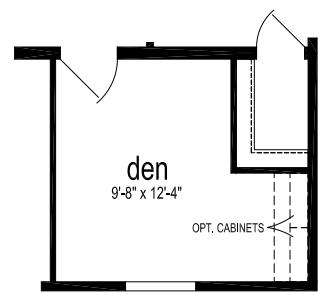
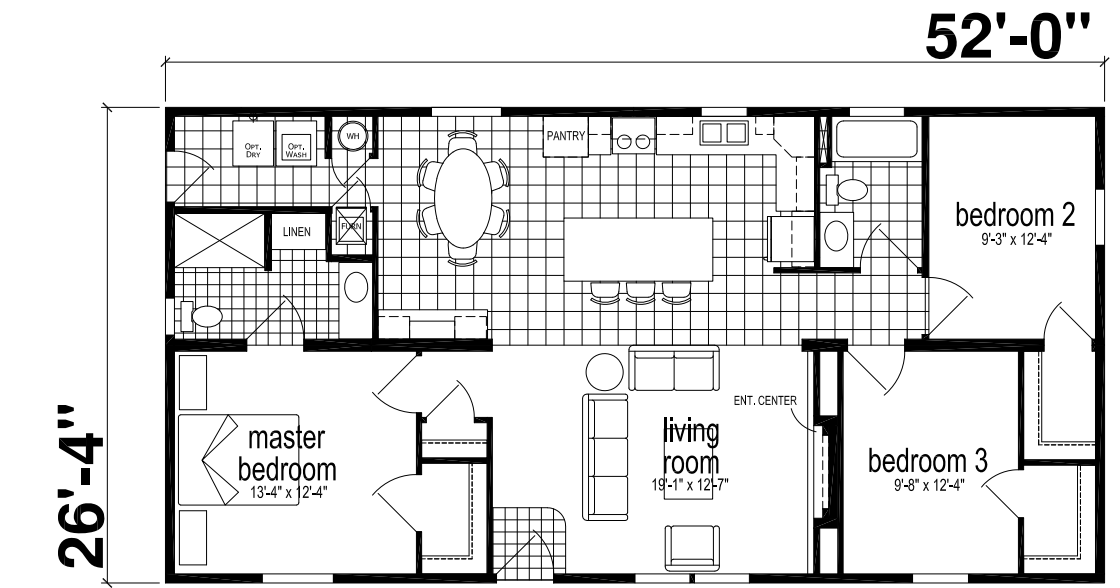
Opt. Utility



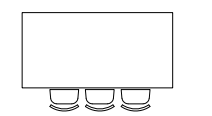
Opt. Walk-in-Shower



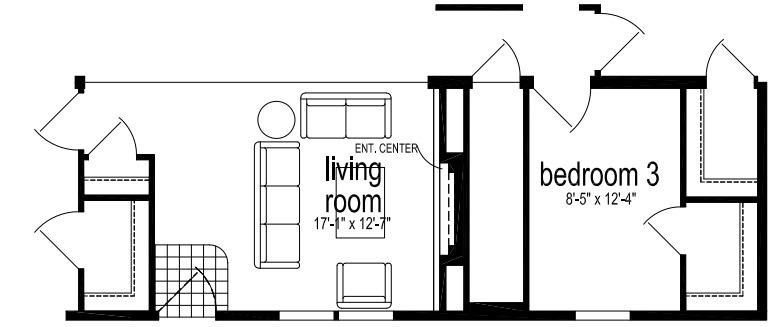
Opt. Double Bowl



Opt. Den



Opt. Granite Countertop



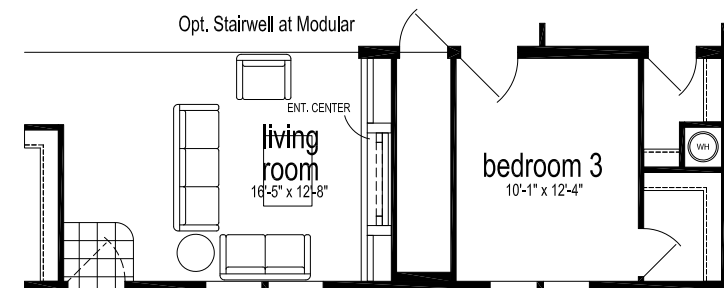
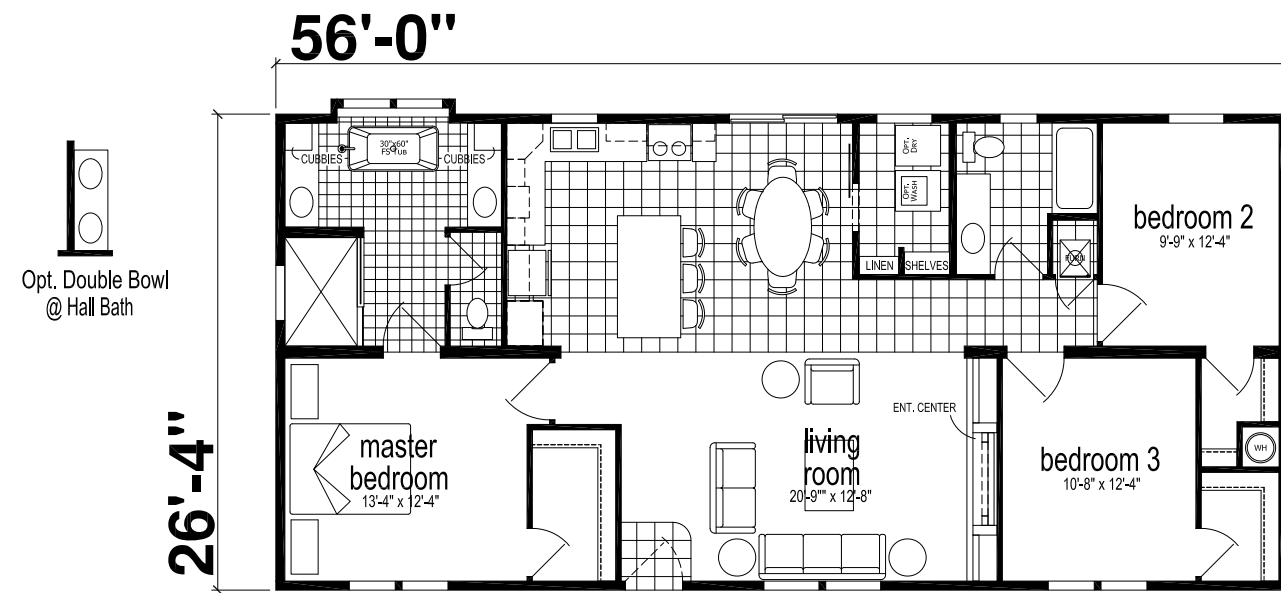
Opt. Stairwell at Modular

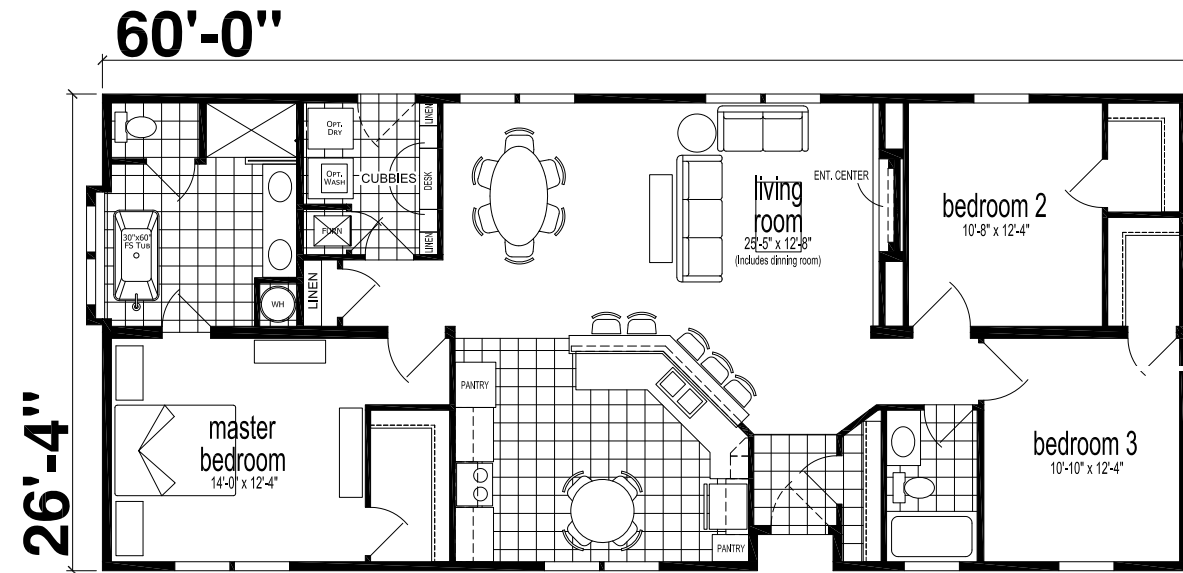


Shown with Optional Exterior

**SKYLINER**  
4732 B

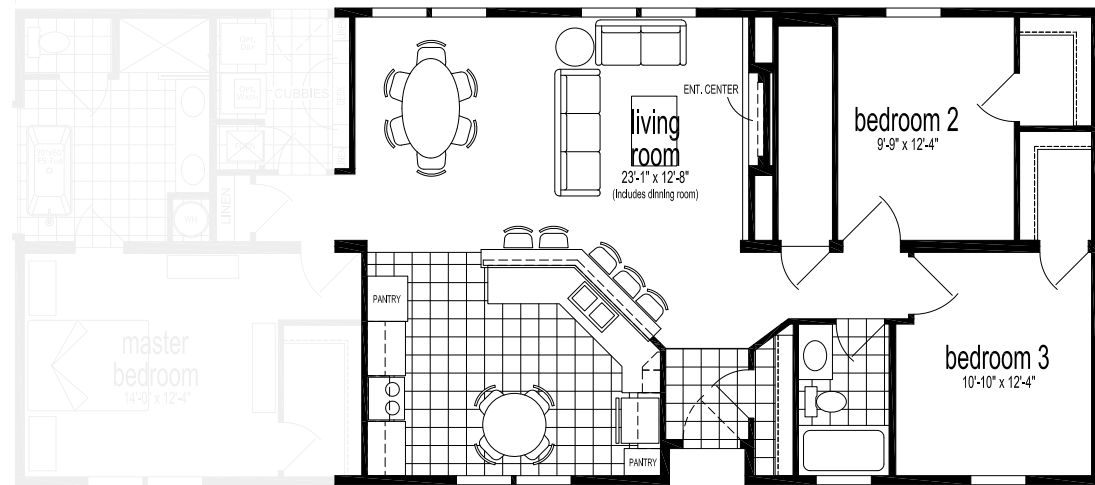
3 BED-2 BATH  
1474 SQ.FT.



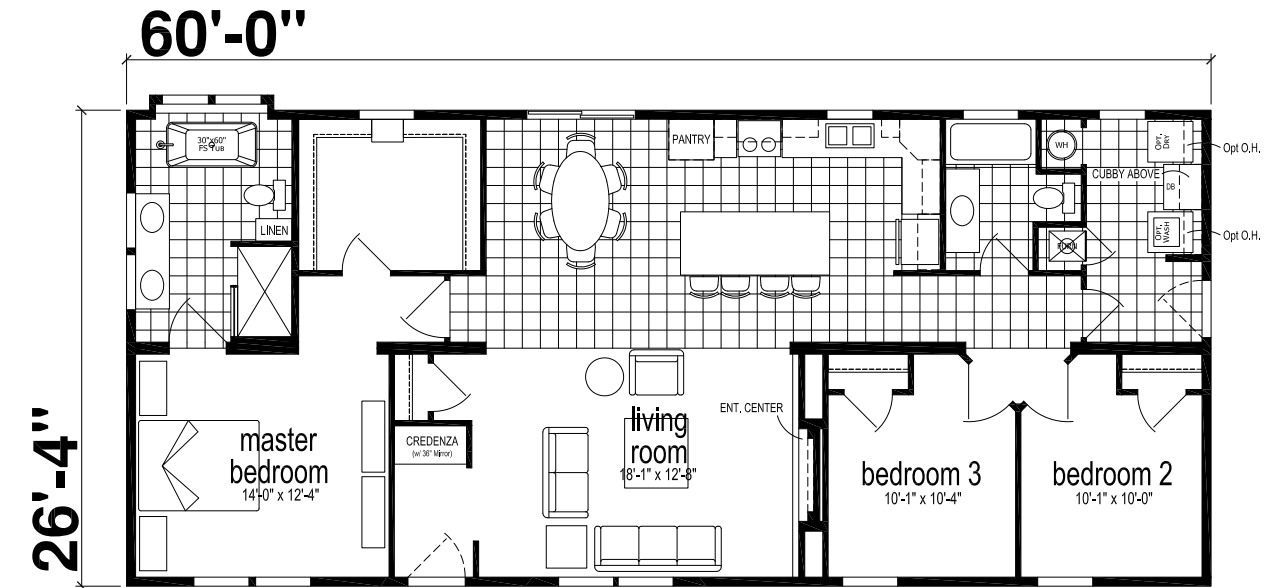


60'-0"

26'-4"

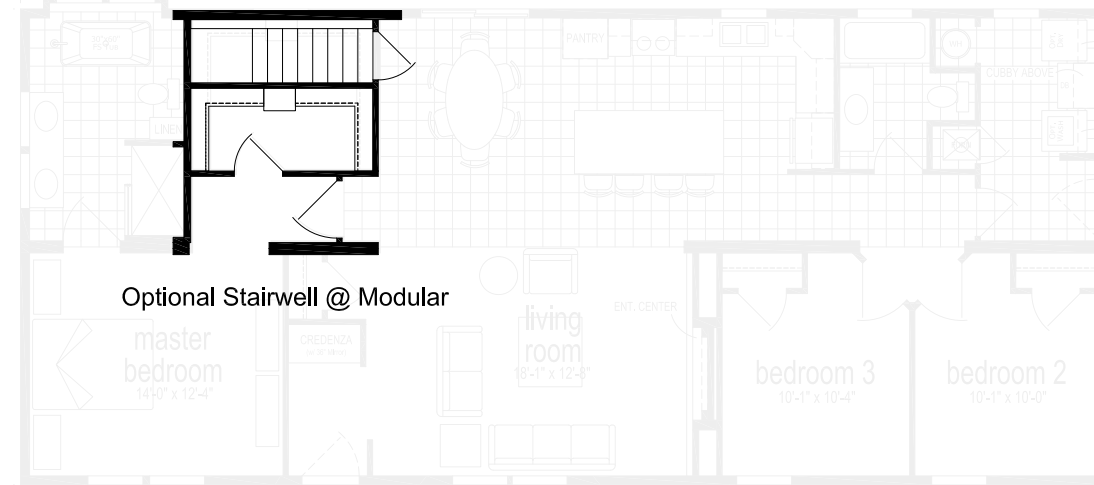


Opt. STAIRWELL @ MODULAR

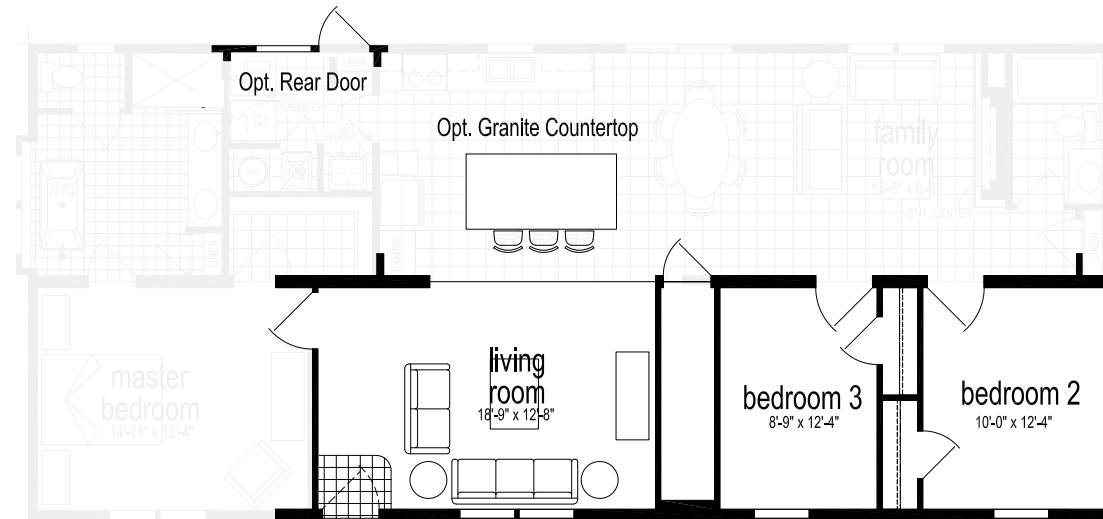
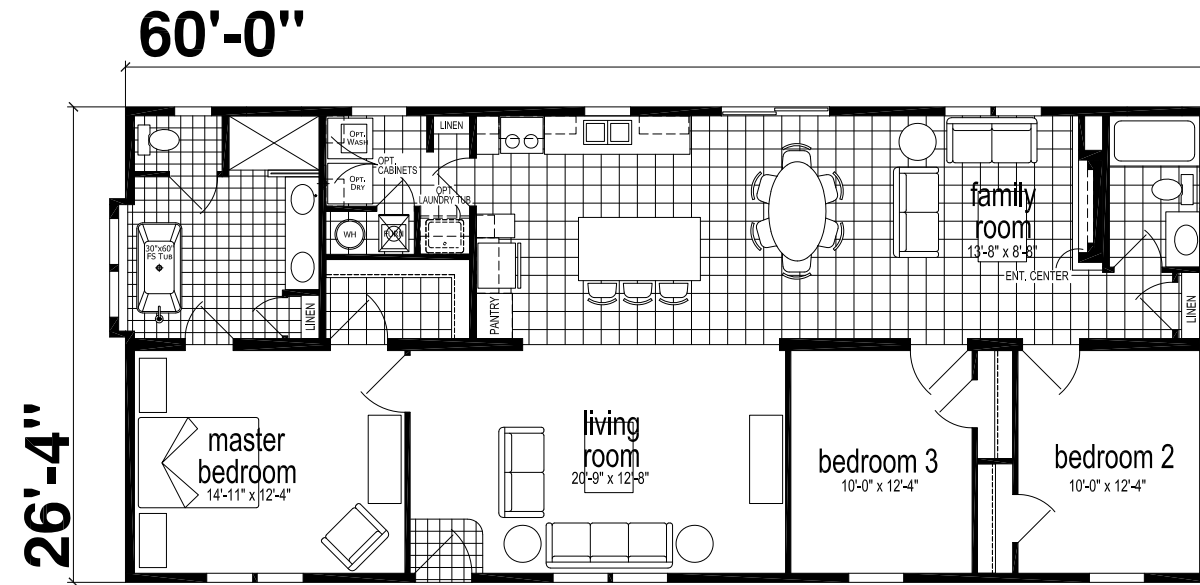


60'-0"

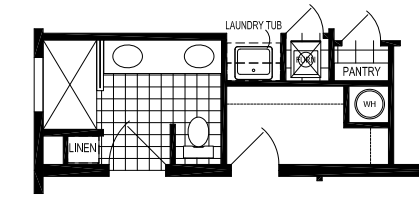
26'-4"



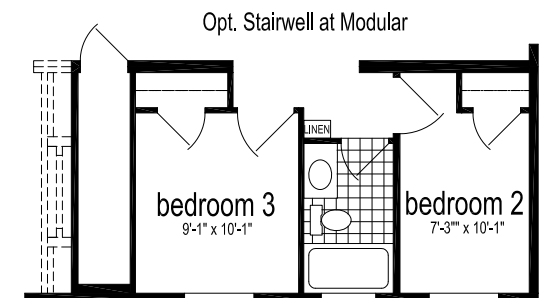
Optional Stairwell @ Modular



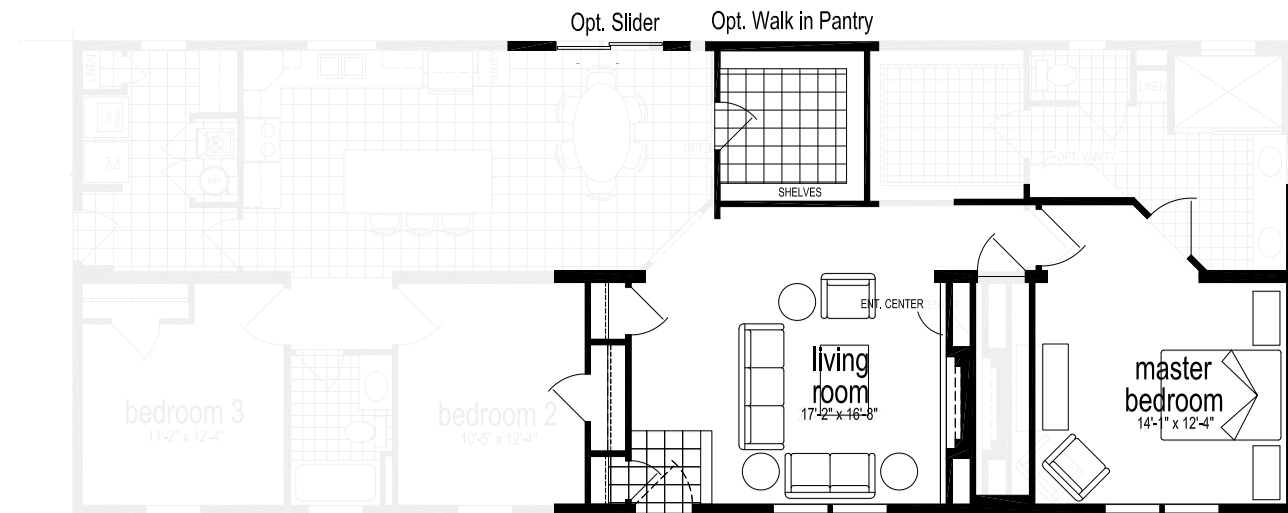
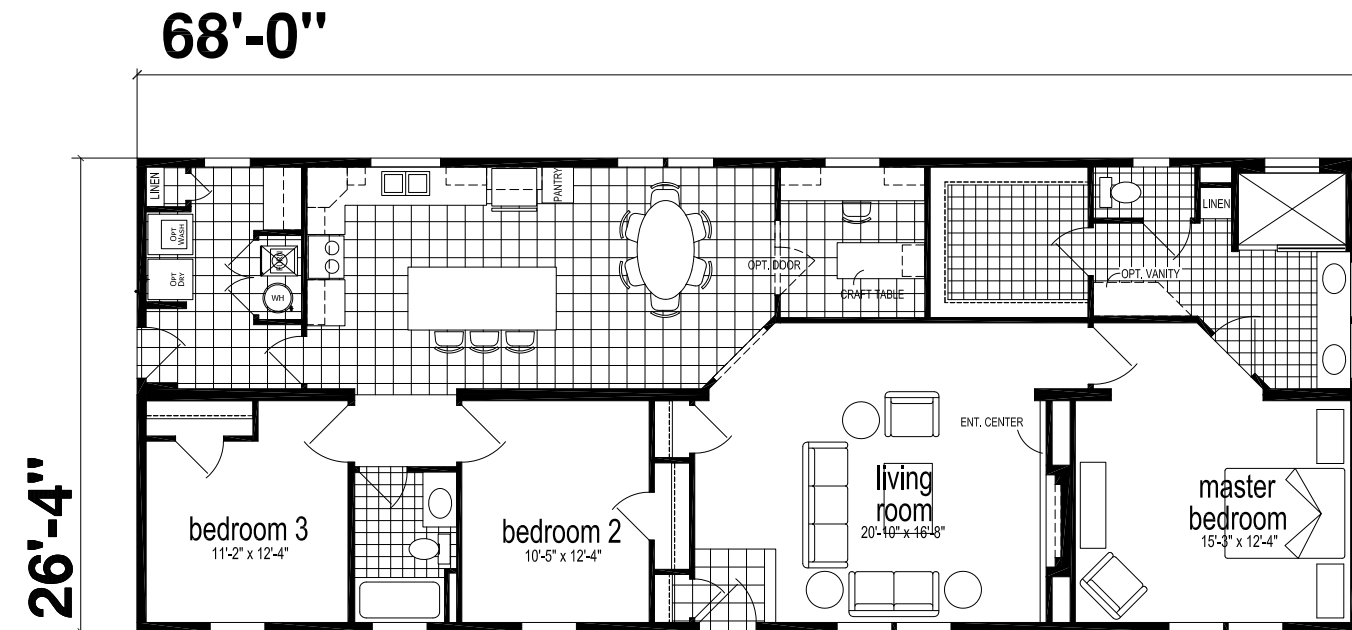
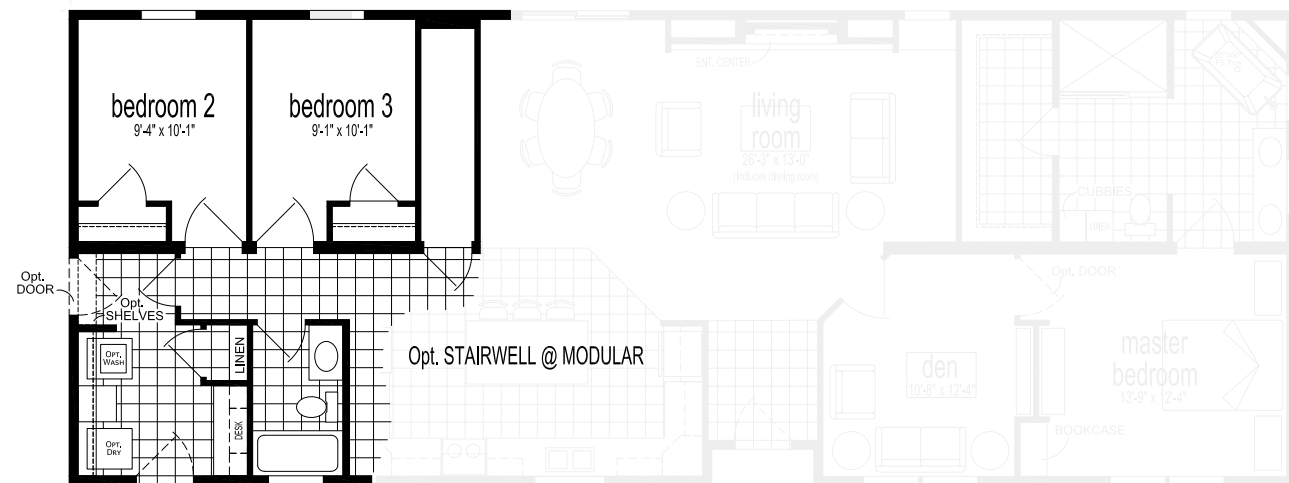
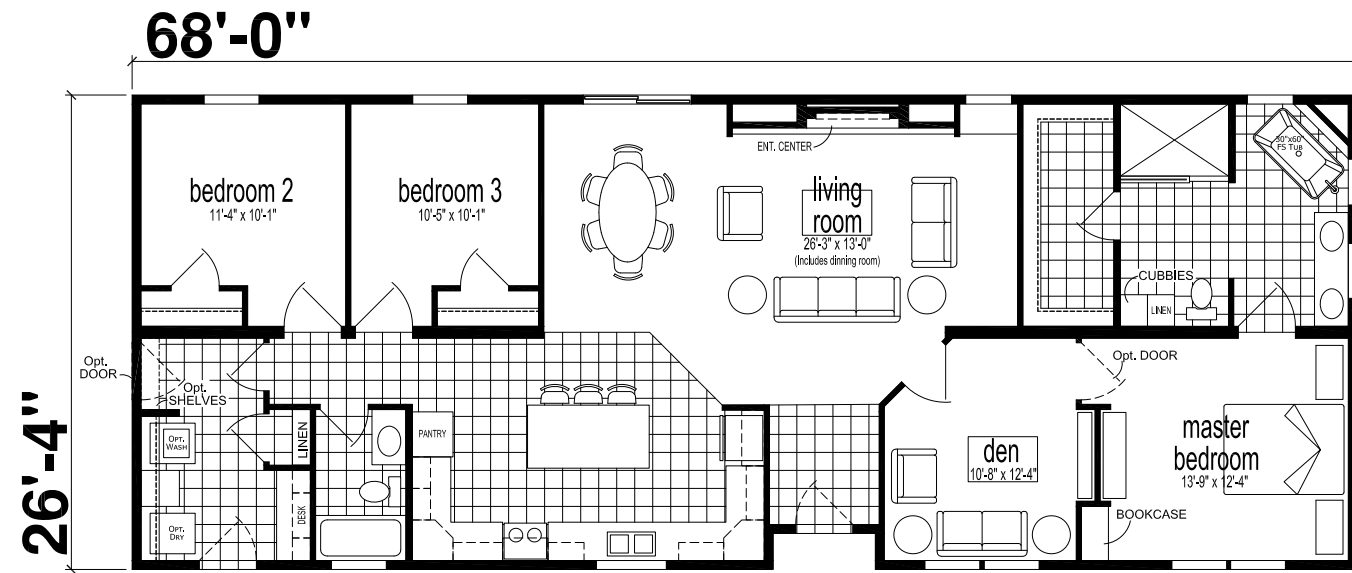
Opt. Stairwell at Modular

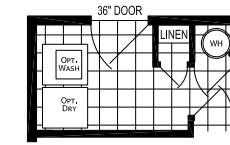
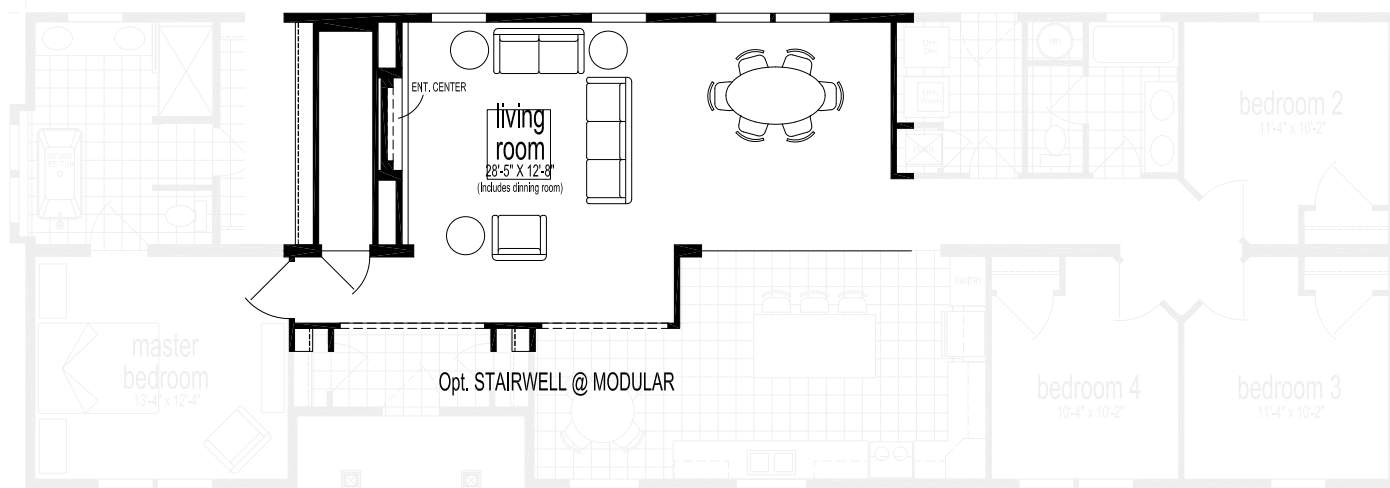
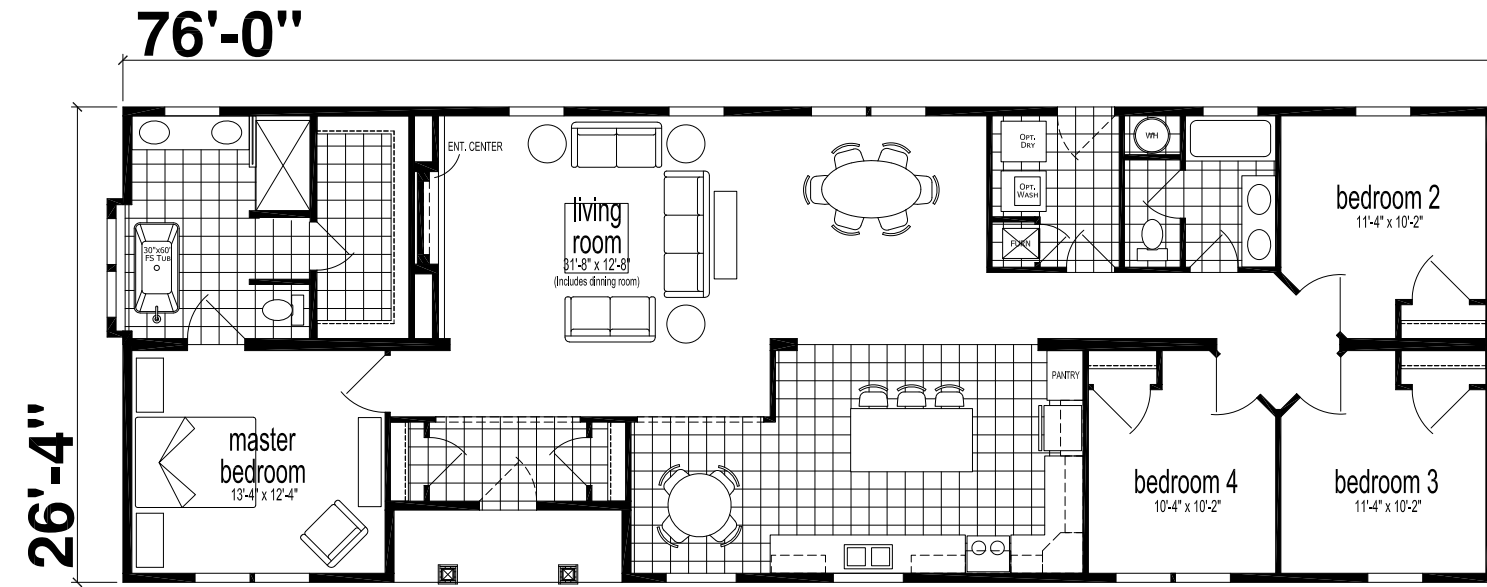


opt. walk in shower

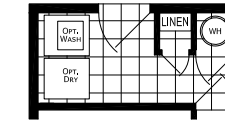


Opt. Stairwell at Modular

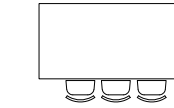




MOD Opt. Utility

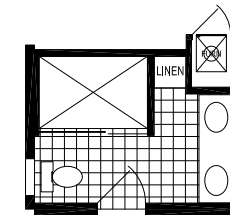
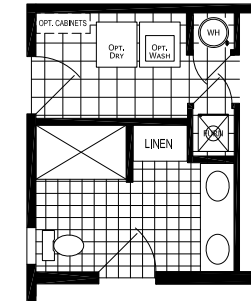


Opt. Utility

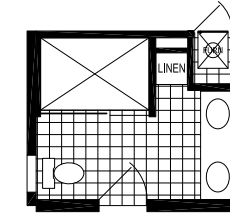


Opt. Island Granite Countertop

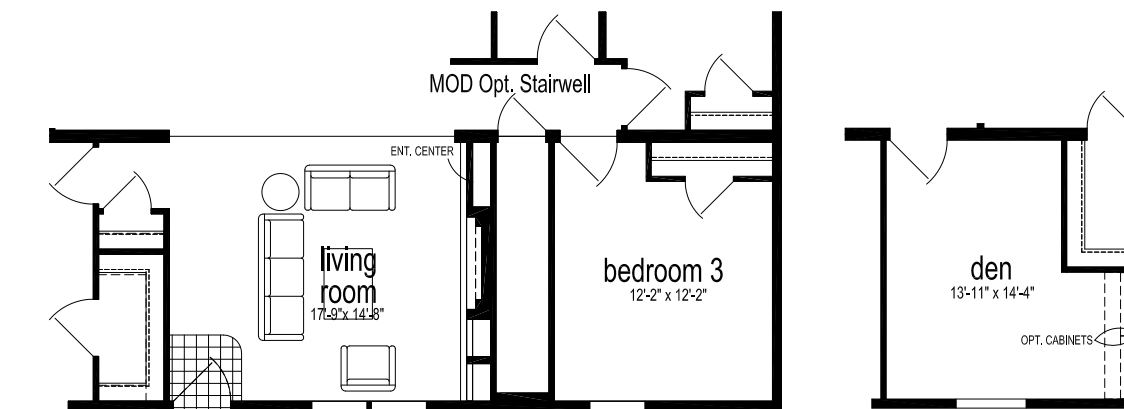
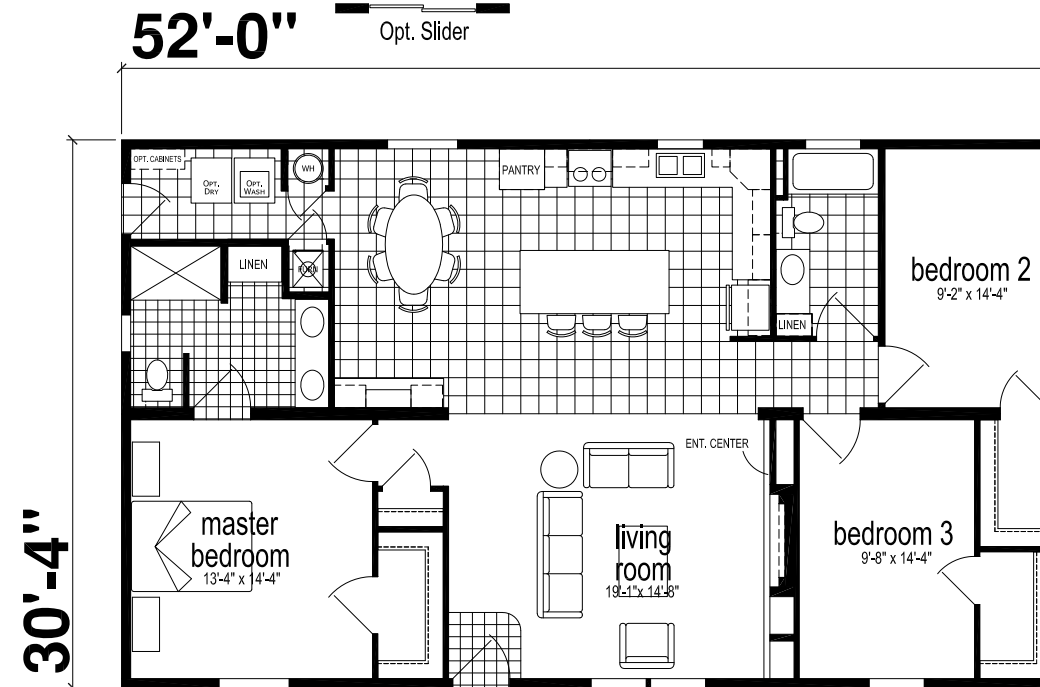
MOD Master Bath Layout



MOD Opt. 4x6 Walk-in Shower



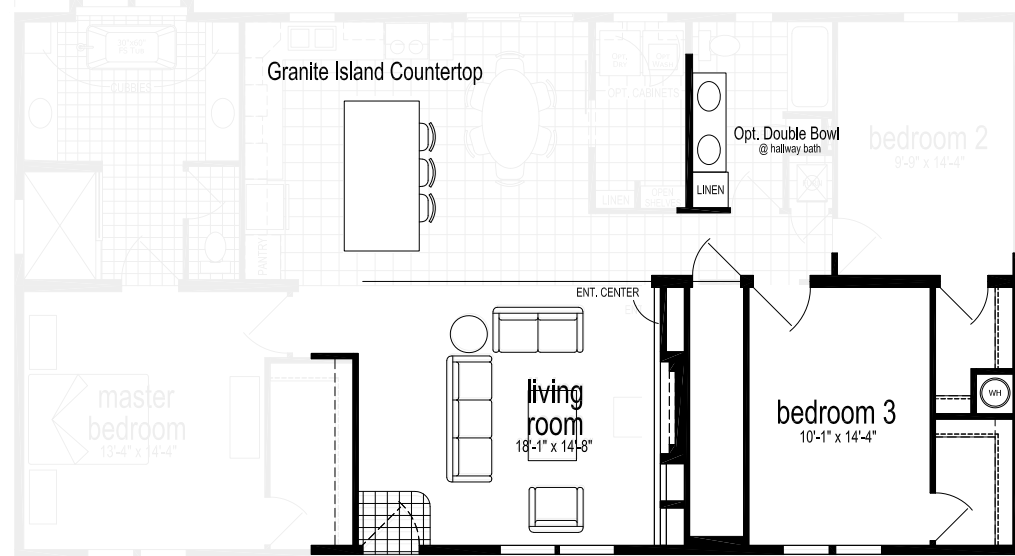
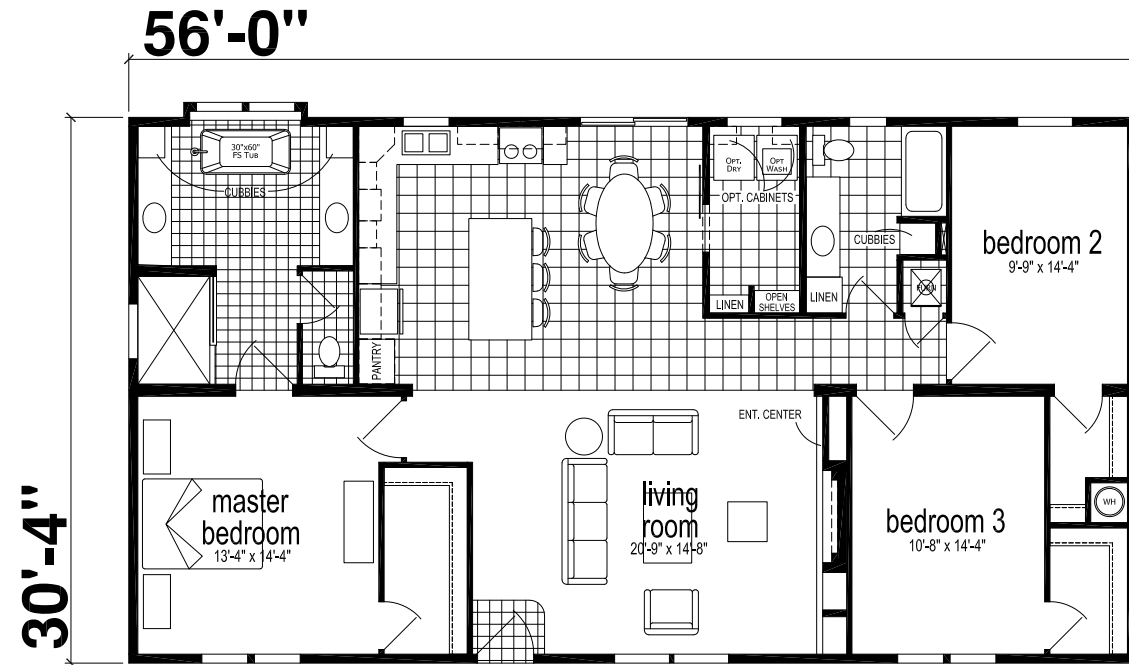
Opt. 4x6 Walk in Shower



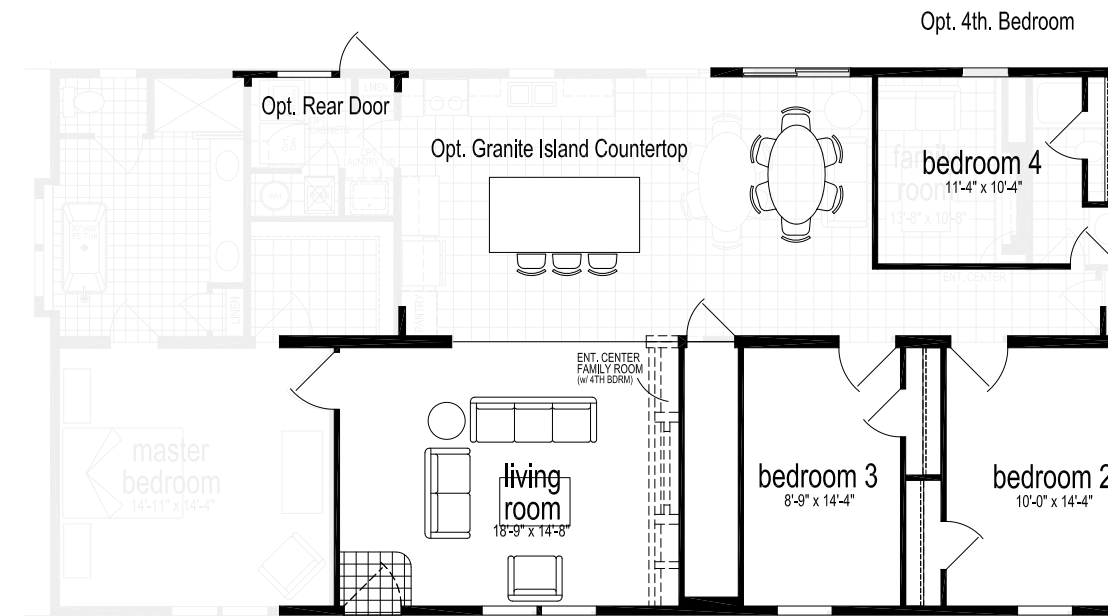
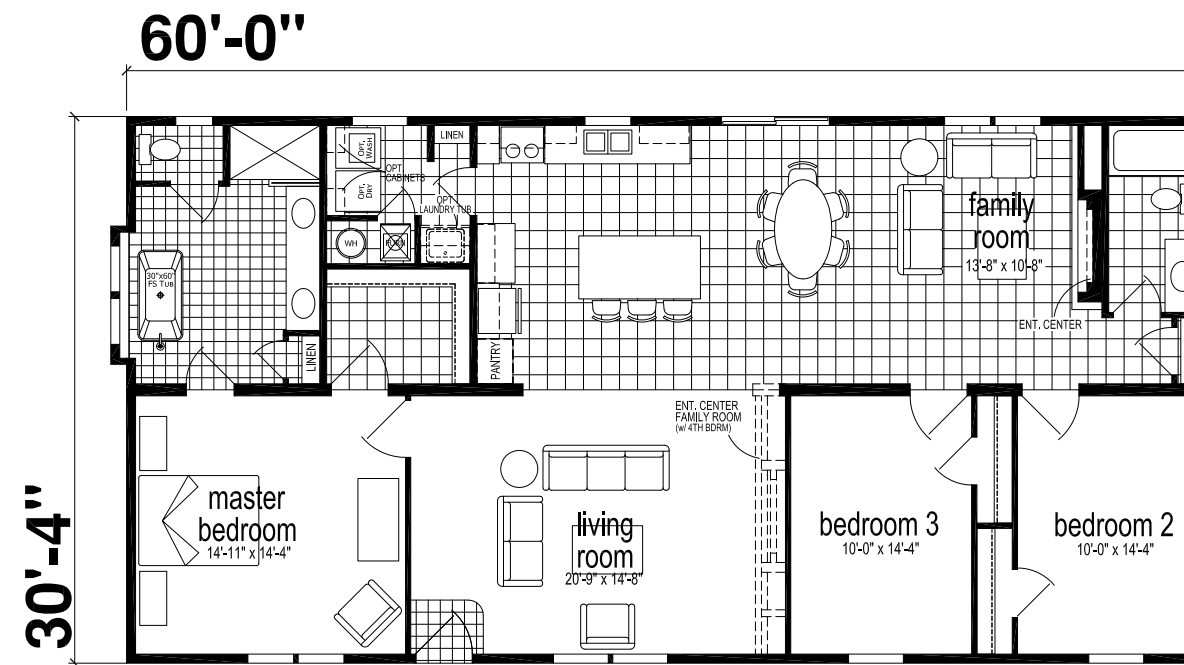
Opt. Den

**SKYLINER**  
6332P

3 BED-2 BATH  
1699 SQ.FT.



Opt. Stairwell at Modular



Opt. Stairwell at Modular

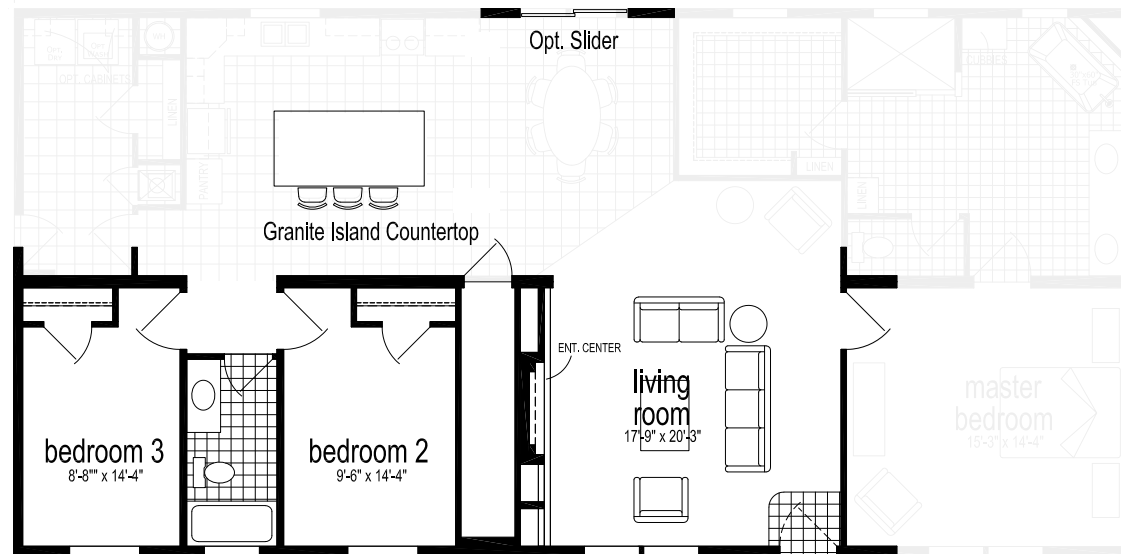
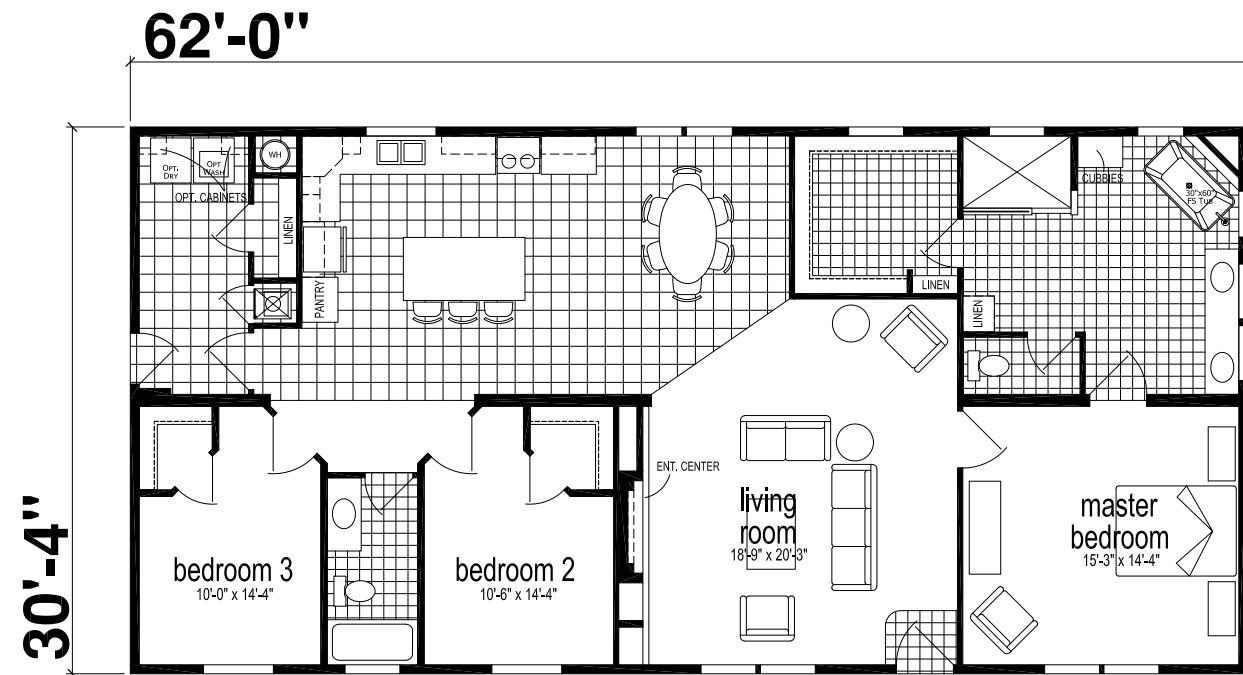
**SKYLINER**  
6366B

3 BED-2 BATH  
1820 SQ.FT.



**SKYLINER  
6300B**

**3 BED-2 BATH  
1880 SQ.FT.**



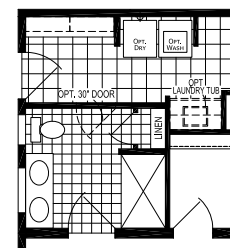
Opt. Stairwell at Modular



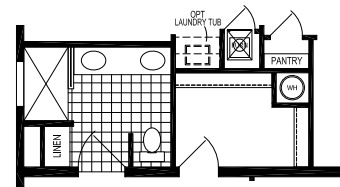
Shown with Optional Exterior

**SKYLINER  
6334P**

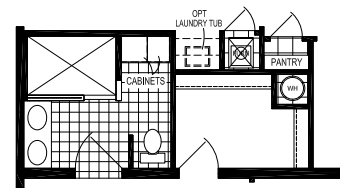
**3 BED-2 BATH  
1880 SQ.FT.**



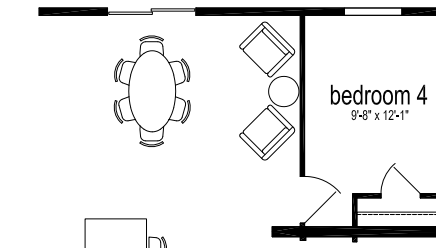
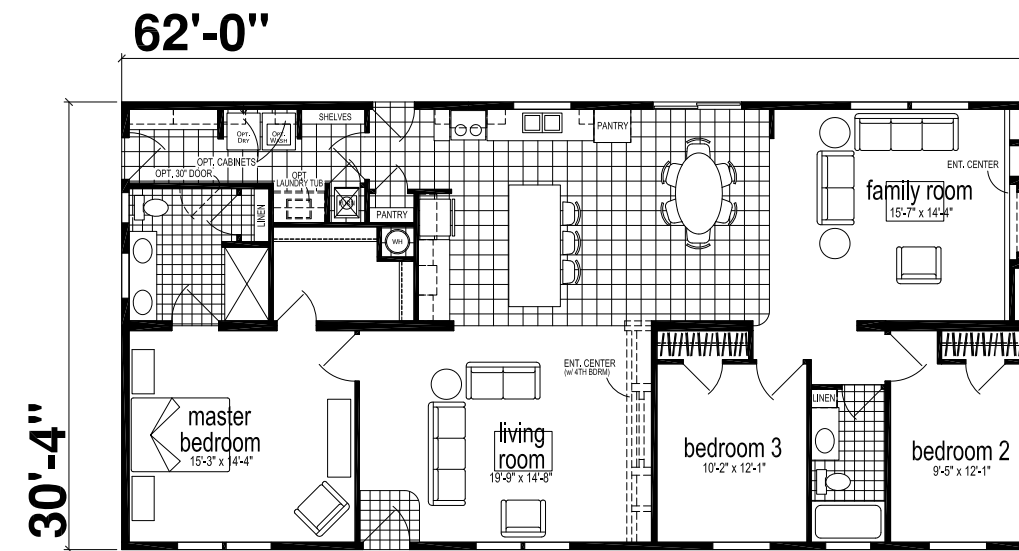
MOD Master Bath Layout



MOD Opt. Walk-in Shower



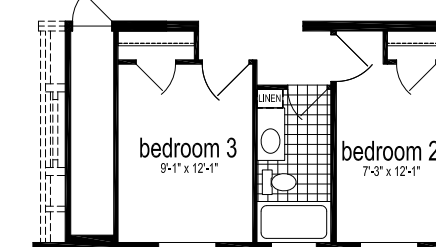
Opt. Walk-in-Shower



Opt. 4th. Bedroom



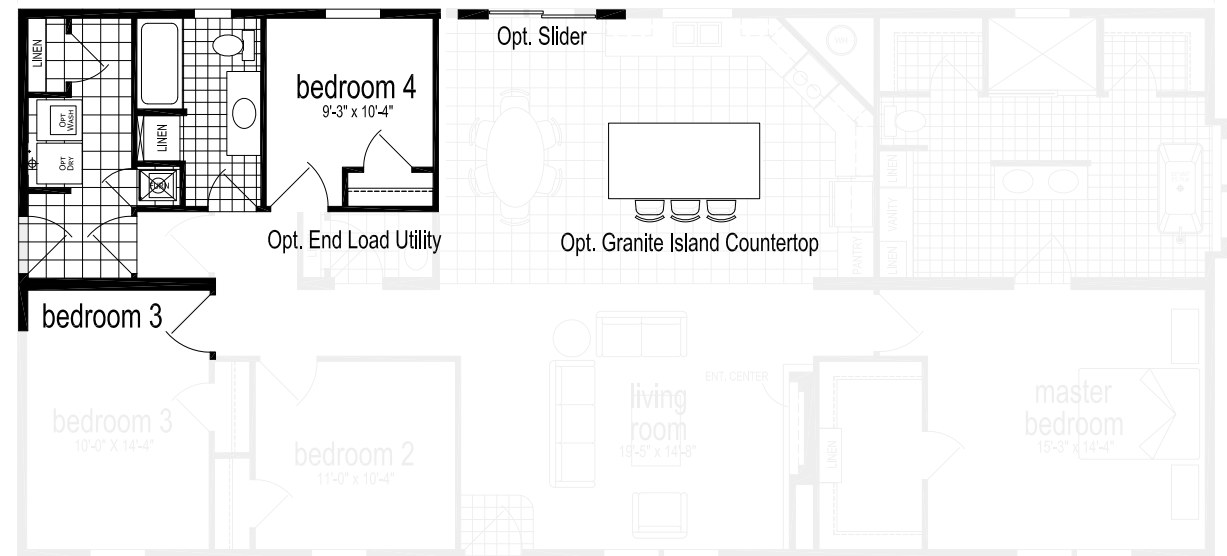
Opt. Granite Kitchen Countertop



MOD Opt. Stairwell

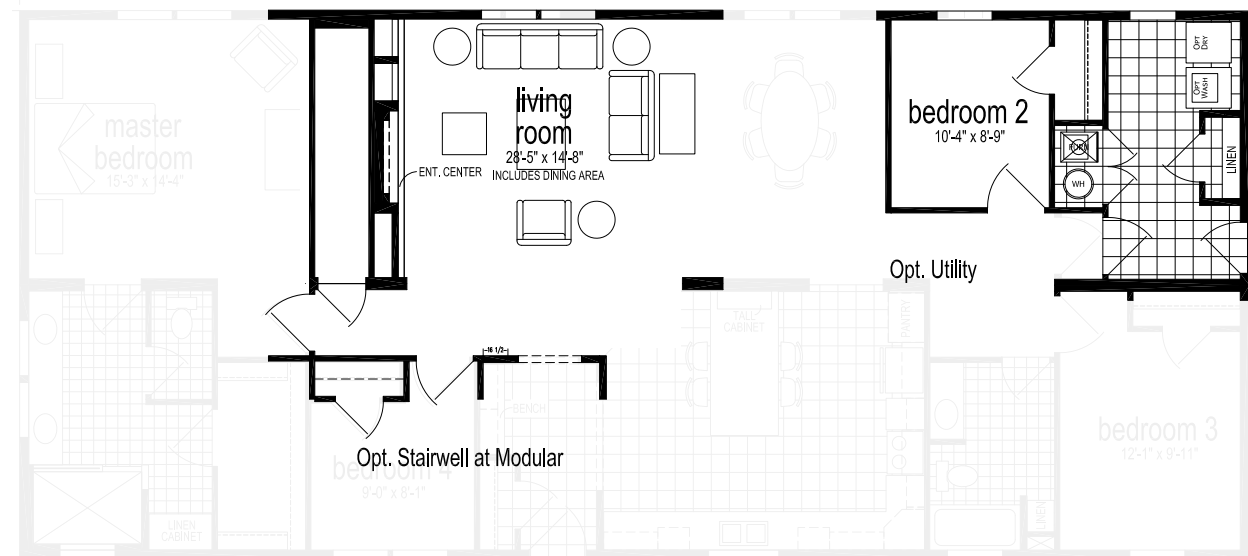
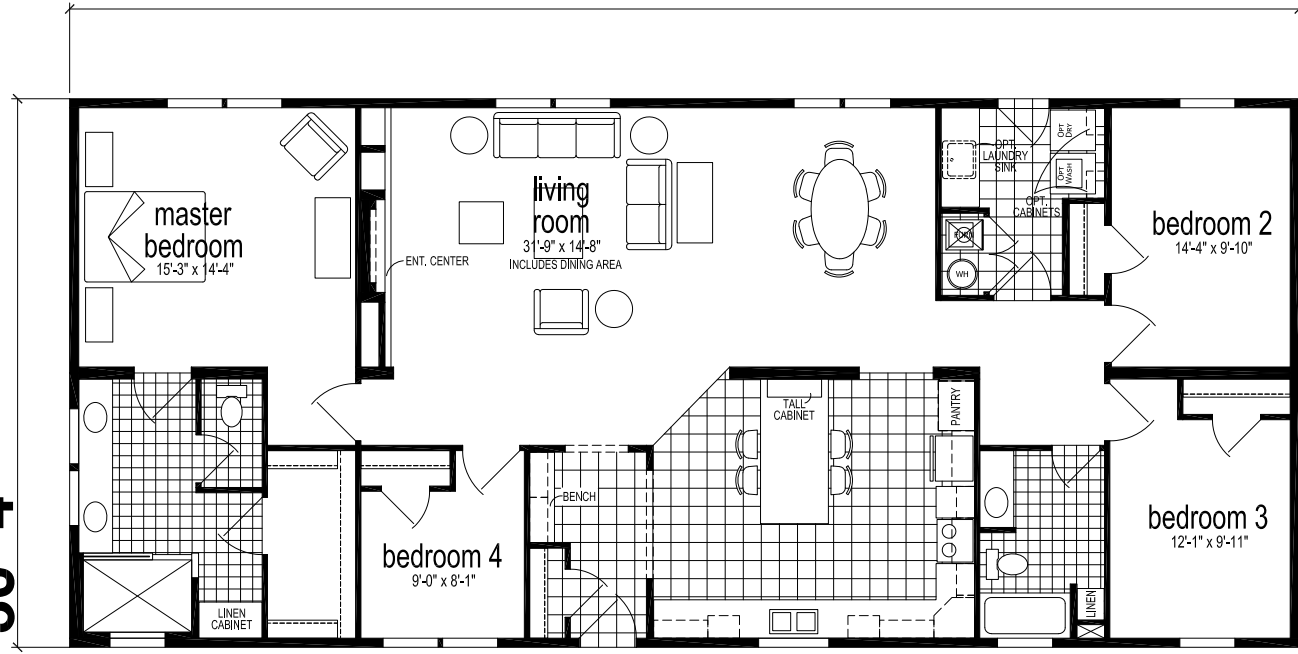
**SKYLINER  
6301B**

4 BED-2 BATH  
2002 SQ.FT.



68'-0"

30'-4"

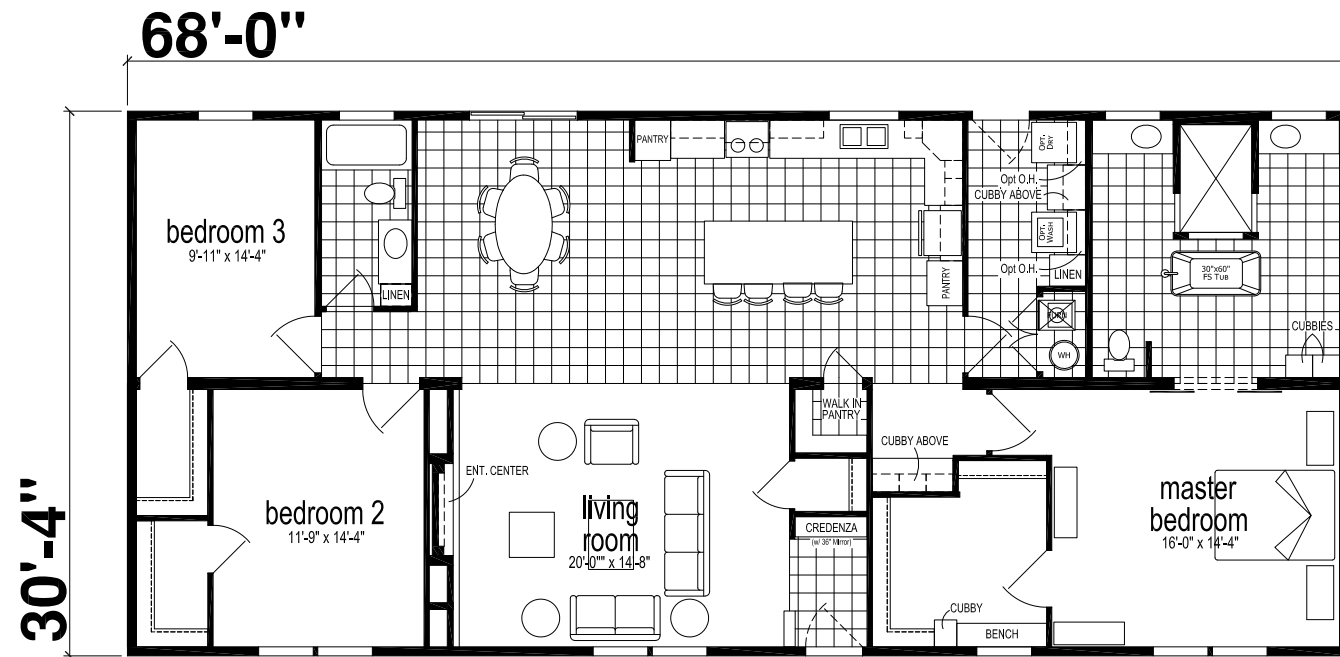


**SKYLINER  
6368P**

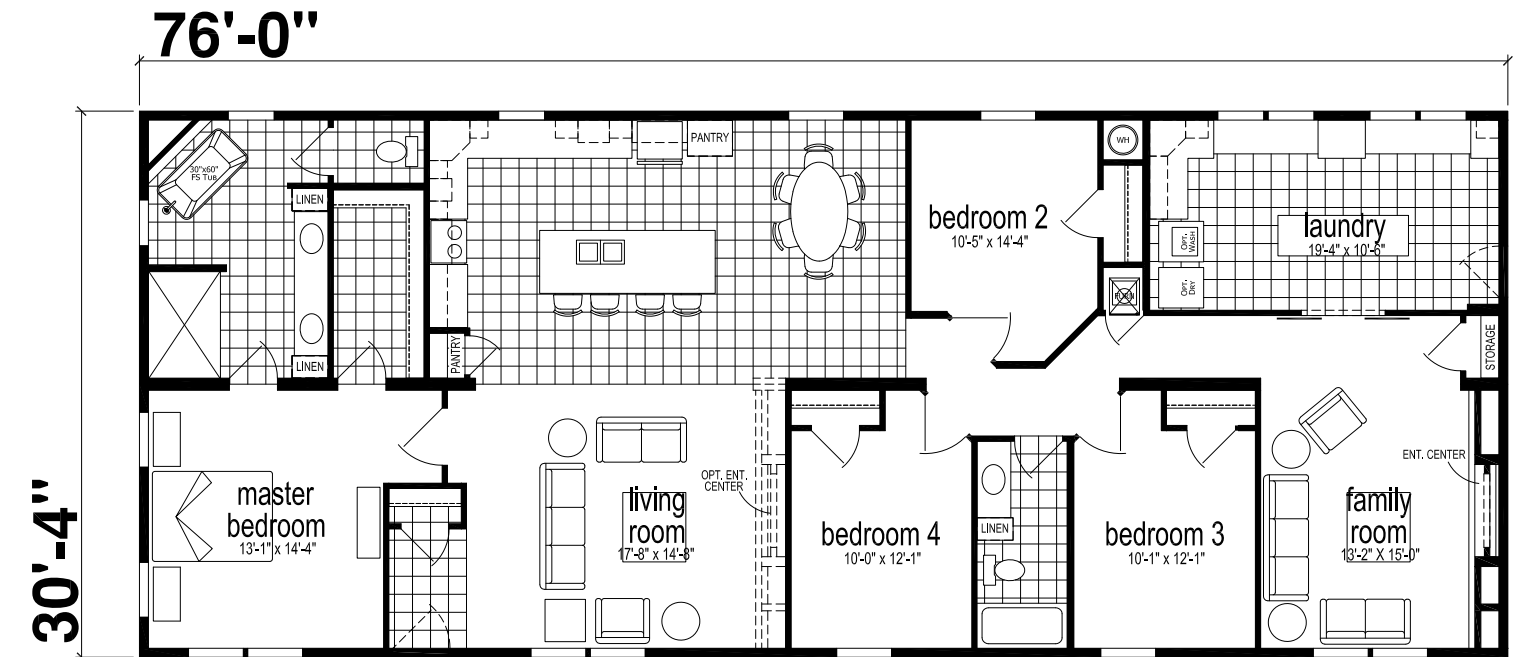
4 BED-2 BATH  
2062 SQ.FT.

**SKYLINER  
6370B**

**3 BED-2 BATH  
2062 SQ.FT.**



Optional Stairwell @ Modular



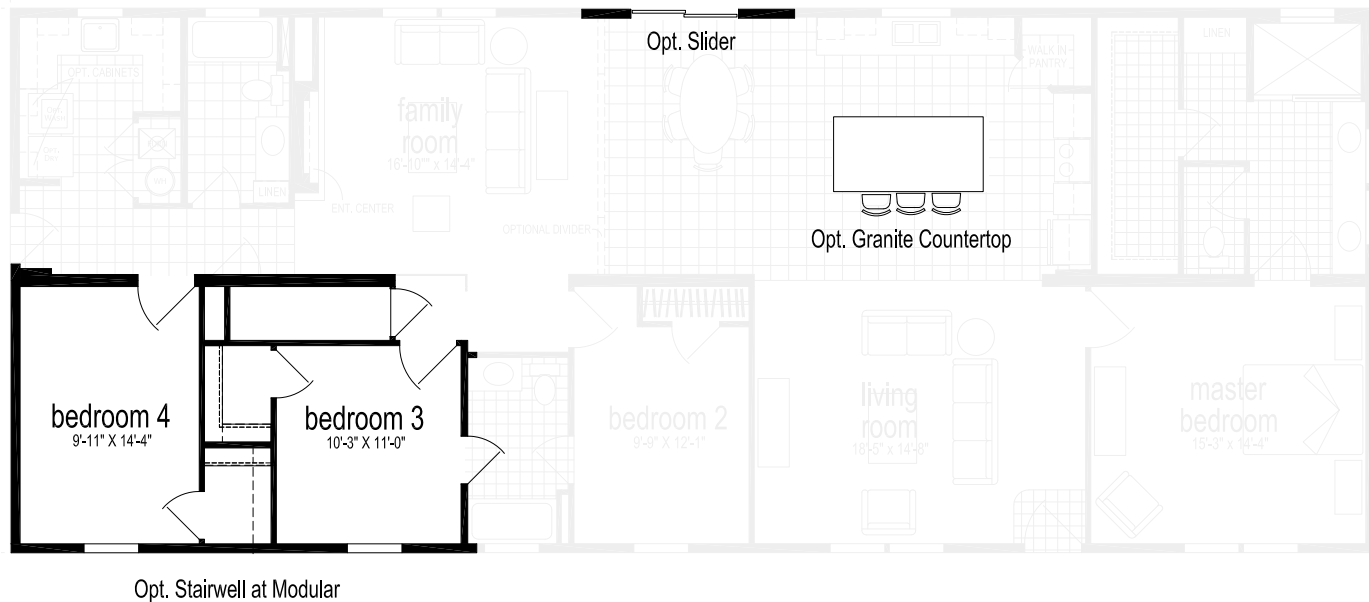
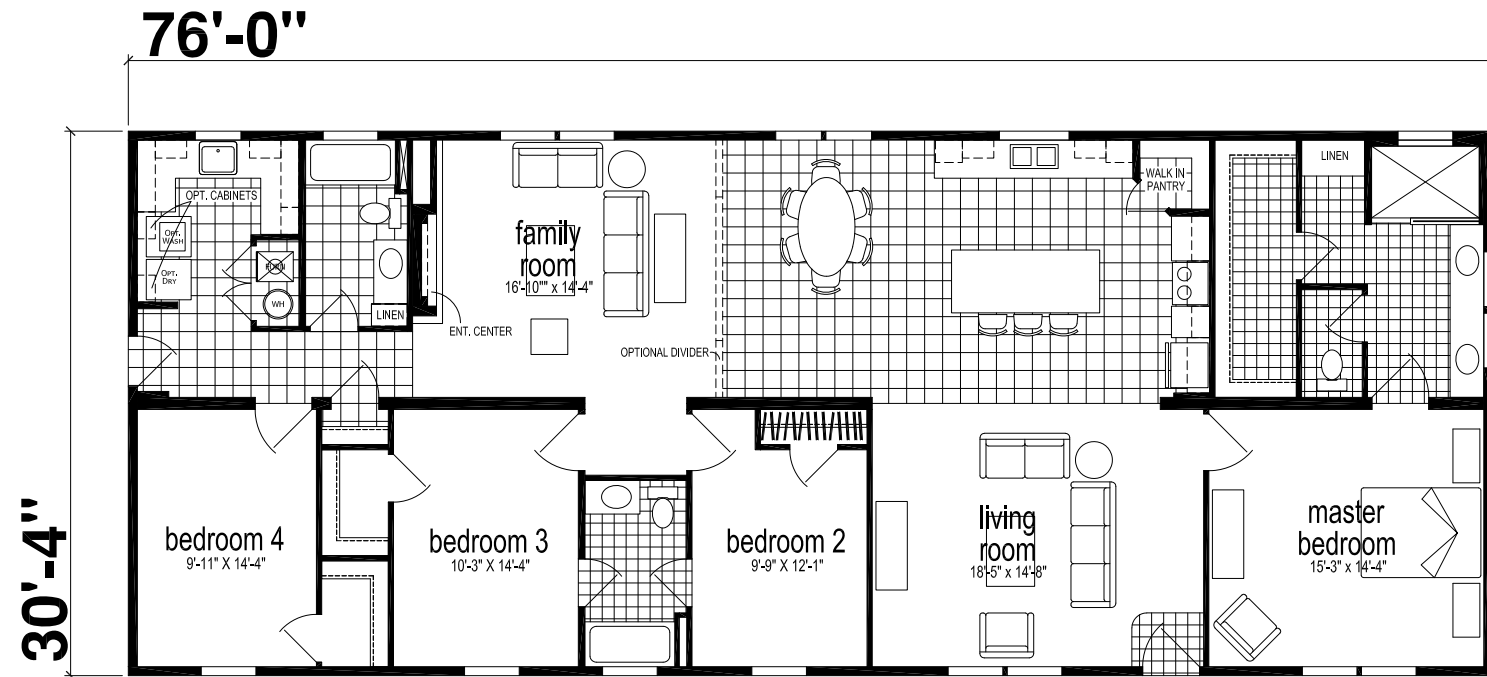
Opt. Foyer    Optional Stairwell @ Modular

**SKYLINER  
6383B**

**4 BED-2 BATH  
2305 SQ.FT.**

**SKYLINER  
6380P**

**4 BED-3 BATH  
2305 SQ.FT.**



**SKYLINER SERIES**

MULTI-SECTION STANDARD FEATURES

**CONSTRUCTION**

- 8'-6" Sidewall Height
- Continuous Plywood Marriage Line Beam
- Flat Ceilings Throughout
- 2x6 Exterior Walls
- 2x3 Interior Walls
- 3/12 Roof Pitch
- 30 # Roof Load
- 2x6 Joists on 28' Wide
- 2x8 Joists on 32' Wide
- Detachable Hitch
- Recessed Frame
- Thermal Zone II
- R 19-19-11

**EXTERIOR**

- Vinyl Siding with House Wrap
- Exterior Window Lineal Trim All Sides
- OSB Sheathing on Sides and Ends
- 25 Year Roof, 3-Tab Shingles
- 36" 4-Light Fiberglass Front Door
- 32" 6-Panel Fiberglass Rear Door
- Storm Door on Front Door
- Single Hung Low-E Windows
- 18' Set Back Dormer with Eyebrow Dormer and Columns (E-304)

**HEATING/UTILITY**

- Electric Furnace
- Perimeter Heat Ducts
- Graduated, Insulated Duct
- In Floor Lateral Cross Overs
- 40-Gallon Electric Water Heater
- Plumb for Washer
- Wire for Dryer
- Wire Shelving Above Washer and Dryer

**PLUMBING/ELECTRICAL**

- 200 Amp Service
- Exterior GFI Receptacle (1)
- Ceiling Fan in Living Room
- LED Lights Throughout (Except Ceiling Fan)
- Wire for Dryer
- Exterior Frost-Free Faucet
- Whole House Water Shut-Off
- Water Shut-Offs All Fixtures
- TV Jack in Living Room (1)

**INTERIOR**

- Tape and Texture Throughout Except Closets
- Linoleum Entry
- Shaw® Mantra Carpet
- 1/2" Rebound Carpet Pad
- Tack Strip and Carpet Bar
- 1/2" Kiri Wood Blinds
- Wood Cornices on Most Windows
- 5 1/4" Crown Molding (19V)
- 5 1/4" Base (28K)
- 2 1/4" Casing (4Y)
- 2 1/4" on Windows and Exterior Doors with 5/8" Wrapped Style Jambs (4Y)
- Painted Accent Wall in Master Bedroom
- MC-256-C Entertainment Center Per Floor Plan
- 50" Electric Fireplace Per Floor Plan

**KITCHEN**

- CS84-6HL Cabinet Construction
- Flat Panel Cabinet Doors
- Hardwood Cabinet Styles
- Soft Close Door/Drawer Hinges/Guides
- Drawer over Door Construction
- Drawer Bank Per Floor Plan
- Crown Molding on Overhead Cabinets
- Roll Out Shelves in Island Base Cabinet
- Crescent Edge HPL Countertop
- 18" High Backsplash Tile
- 8" Double Bowl Sink - Stainless Steel
- Single-Lever Kitchen Faucet

**APPLIANCES**

- 21 Cu. Ft. Black Refrigerator
- 30" Black Electric Range
- Microwave Range Hood - Black
- 4-Cycle Dishwasher

**BATHROOM(S)**

- Flat Panel Cabinet Doors
- Hardwood Cabinet Styles
- Drawer Bank Per Floor Plan
- Tile Wall Shower and/or Fiberglass Tub/Showers
- Sliding Glass Barn Shower Door Per Plan
- Crescent Edge HPL Countertop
- China Lavatory Bowls
- Dual-Handle Lavatory Faucets
- Elongated China Commodes
- Power Vent Fan with Light
- Free Standing China Tub – Master Bath Per Plan
- 2 Rows of Tile Backsplash over Lavatory

**12MONTH**  
LIMITED WARRANTY

All Skyline\* homes are covered by our limited 12-month warranty, the very best in the industry. It's our way of showing our customers how much we believe in the quality we build into every Skyline home. Our warranty gives new homeowners the assurance that comes from working with a company with more than six decades of building.

Due to continuous product development and improvement, prices, specifications, and materials are subject to change without notice or obligation. Square footage and other dimensions are approximate. Exterior images may be artist renderings and are not intended to be an accurate representation of the home. Renderings, photos and floor plans may be shown with optional features or third-party additions. All floorplans and features are subject to local code approval. \*Skyline is a brand of Champion Home Builders, Inc.

**SKYLINE**<sup>®</sup>

Arkansas City, KS

Member:

